

Safety

- ◆ All of these devices are dangerous. Someone can easily sustain a severe injury using any of these devices.
- ◆ Remember that it is only safe to lock down to equipment/ vehicles when they are not running and when the operator has been positively made aware that someone has locked to them.
- ◆ If something looks sketchy, it probably is. Use extreme caution.
- ◆ Practice, if you are in a hurry and don't know what you are doing, you can easily make mistakes. These mistakes can cause lives.
- ◆ Have someone who is experienced help your group with the blockade either by extensive training before hand or by being at the action.
- ◆ Remember, the material in this pamphlet is very limited due to space. With all of this equipment, there is more to know. Please seek out the knowledge before attempting a blockade.

Have fun

Direct Action Gets the Goods!!!!

WITH THANKS TO CAT!

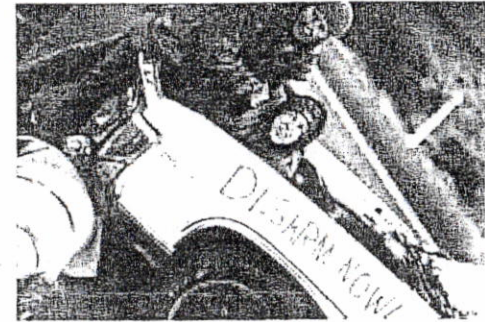


DAM Collective
C/O Feral Press, PO Box 1212, Tucson, AZ 85702

\$5-\$5,000 Sliding Scale Donation for Manuals and Direct Action
Make checks payable to Earth First!

BLOCKADES

Blockade: any hindrance or obstruction to action or traffic; to beset by a hostile force, so as to prevent ingress or egress.



There is a time when the operation of the machine becomes so odious, makes you so sick at heart, that you can't take part; you can't even passively take part, and you've got to put your bodies upon the gears and upon the wheels, upon the levers, upon all the apparatus, and you've got to make it stop. And you've got to indicate to the people who run it, to the people who own it, that unless you're free, the machine will be prevented from working at all!

Mario Savio

This manual will in no way give you all the necessary information that is needed to set up a safe and effective blockade. However, this should be used as a tool to get you on your way.

Important basics:

- ◆ Make blockading an effective part of your campaign strategy
- ◆ Start simple and build on that- why give those trying to get you out of your lock downs all of your technology at once!
- ◆ It all begins with a good affinity group and non-violence training
- ◆ A good support team is vital
- ◆ Scouting, scouting, scouting!
- ◆ Know your choke points. that spot that makes you the most secure and pesky blockader... choose a spot they can not just drive around you !!!!
- ◆ Practice over and over
- ◆ Call the media. If you are in the back woods how will you get your message out otherwise
- ◆ Always stress safety first
- ◆ **Have fun and be creative**

Body blockades

There aint no power like the power of the people, cause the power of the people wont stop!



This one is simple- stand or sit, link arms, and stay strong !!!!!
You can strengthen this one by putting your bodies in knots.

What follows next are some devices that can be made to strengthen your blockade. Some of these are simple and some are more technical. Play around and see what you come up with.

* if you are worrying about the cement being dry in time, have the last layer of cement be quick dry. This will give the "appearance" of the thing being solid and hopefully by the time they try and get you out, it will be.

Armoring

Armor the outsides of your barrel or stump with chicken wire and nails. This is especially important to do when using a stump. Cover every inch !!!!!

- paint your message on the device. Red paint dripping down makes a nice bloody image.

Moving the thing!

- ◆ A dolly is needed to move the barrels. Load them onto a flat bed truck that can hold a lot of weight.
- ◆ If you are using this device in the city, use a dolly, put a box over it and walk down the street as if you belong there. If you look like you know what you are doing, nobody will question you!

Lock boxes can also be settled into smaller garbage cans, furniture, sofas, refrigerators, and cars... get creative and let your imagination go wild.
Barrels with lock boxes can also be put under ground to make dragons.



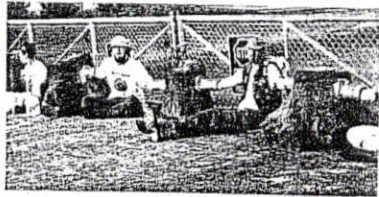
Nevada Test Site (highway blockade)

** there are many aerial lock downs such as tripods, cantilevers, bipods and monopods that this manual does not cover. These are more technical and training is definitely needed to know how to use these devices.

- ◆ There should be enough chain that you can easily work the clip. Don't have the chain too long. It is very important that someone can not just pull on your arm, exposing the chain. This gives them the opportunity to cut it, there by releasing you.

Barrels and stumps

What they are - they are hollowed out stumps or concrete filled 55-gallon drums, fitted with lock boxes. Each barrel weighs about 1200 pounds when completed.



Uses – good for both back woods and urban blockades. But remember the barrel is heavy and you have to get them to your target. Stumps are lighter and easier to transport.
-place in front of gates and doors or across train tracks and highways.

Materials needed

- ◆ 55 gallon drum (steel is best)
- ◆ 10 large bags of concrete, if low on prep time, add 1 bag of quick set
- ◆ 2 lock boxes per barrel
- ◆ rebar, chicken wire
- ◆ water
- ◆ 5 gallon buckets for mixing cement

How to make

- ◆ cut 4" diameter circular holes into sides of drum. (or whatever size your lock box is). Figure out where your lockdown persons want their arms. That is where you make your holes. The best way to make the holes is with an acetylene torch- you can usually rent one.
- ◆ You can make the lock box out of steel or PVC. You just need to make a mold that your arm can go through. When using a stump, however, use steel- this reinforces your lockdown. Once they get through the stump itself, they still have to contend with the metal lock box!
- ◆ It is recommended to use two lock boxes so that if they get through one of them, the other person is still independently attached to their own lock box. This way they can't just reach in and unlock your buddy! Just angle the lock boxes so that there is room for two.
- ◆ Mix cement in buckets- stirring constantly. You want oatmeal consistency.
- ◆ Start pouring cement into 55 gallon drum
- ◆ Add rocks
- ◆ Right before the armholes, add the lock boxes.
- ◆ Keep adding cement. But also add rebar pieces going different directions and bits of chicken wire or steel mesh. **When you mix cement with metal, you strengthen it.** Continue this right to the top.

Tools of blockading

U-LOCKS

- ◆ Relatively cheap
- ◆ Easy to use
- ◆ Easy to conceal
- ◆ Ability to be creative

applications:

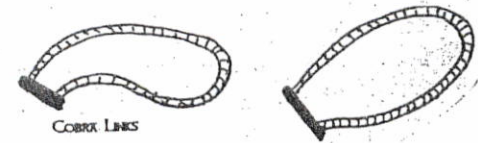
doors, wheel axles, signs, heavy equipment, office furniture, gates, fences, bridges, rail tracks, friends (to form a human chain), and many other places. Let your imagination go!



- ◆ Locks come in different sizes
- ◆ Usually a single lock will do- but if more room is needed to lock around the object, use two intersecting locks. Just put the lock around your neck and attach yourself to your favorite object.
- ◆ Beware of electrical wires and attach yourself to something stationary or something that can't just be picked up!!

There is always a need to have a discussion about what your affinity group wants to do with the keys. It is good to have one close by for emergencies and give the other to your support person. Some folks like to have a key on them, but these are easily found with a search. Whatever you decide, keep it consistent within your group.

Motorcycle cables

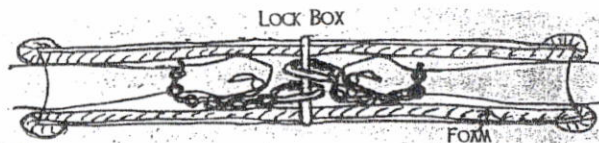


a cobra link is a hardened steel cable encased by overlapping hardened steel plates. They are stronger than u-locks. This type can be very expensive however. For the purposes of strengthening a blockade, a kryptonite motorcycle cable will work. This device will expand the u-lock application for those hard to reach places. One good way to use them is to wrap them around your waist and through poles on a fence. Just like with u-locks, you need to keep the key close to you for emergencies.

Lock boxes- steel pipes designed for you to put your arm through and lock your hand around a metal pin at a center point- or to another person's hand. The pin is what the lock down person clips their wrist to with a chain "bracelet."

Uses

Gates, fences axles, tripod legs, equipment, each other, chip mill cranes, and a plethora of other objects.



Decide what you will be locking to and that will determine whether you use a straight or an angled lock box. (for example, locking to the axle of a car is a whole lot easier and more comfy with an angled lock box.)

How to make

Get 24-26" length of schedule 40-1/4 inch thick, 4" diameter, however this is not always the case. Some people's arms are smaller and some are bigger. A lock box should fit the activist, not vice versa! If it is too wide they can reach in and get you out easier. If it is too small, you run the risk of cutting off your circulation.

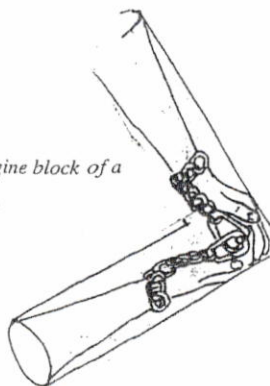
- ◆ You can go to a metal shop and have these cut down- or maybe you have a welder friend that can do it for free. Always try scrape yards to get the metal cheapest.
- ◆ Cut a 4.5" (3.5" if using 3" diameter pipe) metal pin -rebar is good.
- ◆ Drill a hole in the center of pipe-angle it just a bit, this makes more room for your hand and also separates the weak points.
- ◆ Spot-weld the ends of the pin to the wall of the box (it is a good idea to spot weld a few "extra" places to throw the cops off!)
- ◆ File smooth the pin welds and the end of the box

* where you attached the pin is the weakest point of the lock box

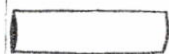
ANGLE 45-90 degree (depending on lockdowns arm and target)

Why use this over a straight lock box!

- ◆ It is more comfy
- ◆ Bigger span that your arms can get around
- ◆ You can lock two people together in more difficult spots. (example- engine block of a car to a person underneath the car. Just like the first picture!)



ALTERNATE FOR MASS ACTION



cut ABS/PVC pipe to size



wrap tightly with chicken wire



Seal cleanly with 2 layers

uum!

How to make

- ◆ Start with same materials as with a straight box. 30" length this time.
- ◆ Cut in 1/2 at an angle (whichever one your box will be) - like 45 degree angle to make a 45 degree lock box. When you rejoin the pieces you want the angle to match.
- ◆ Smooth the ends you are joining and sand any rough spots
- ◆ You can put a pin in or it will also work without one. The advantage to using a pin is that when the cops are pulling on you- your friend isn't being pulled with you because they are attached to the pin.
- ◆ Remember if you are using a pin; spot weld it in one of the pieces before you weld them back together. Place it at the end of one piece at an angle.

** you can play around with these devices to make "super lock boxes".

** you should also armor them with chicken wire and wrap them with duck tape. Also paint a message on your lock box. After they take away your signs and the press is late, a message is still going out there!!

Bracelets-

So I am sure you are wondering how to attach yourself to these funny metal things called a lock box! It's easy.....

Some people have used handcuffs but it is not advisable. They are dangerous and very uncomfortable. (trust me, you will have plenty of time in handcuffs once the cops remove you!!!) There is no way to release yourself in case of emergency and also there is no way to get away if you have a chance. So instead, you should sport the latest in jewelry! The Chain Bracelet.

How to make

- ◆ 12-15" length of 1/8" thick steel chain (these sizes may vary)
- ◆ a nut and bolt or some other connector
- ◆ a small non-weighted carabeener (like the kind folks use for key chains) or any spring clip. Just make sure it is not too big and gets in the way and also that the gate is big enough to go around your pin. Also make sure it fits through the chain!!!

How to use

- ◆ wrap material around your wrist. An old sock with the toe section cut off works well. Put it over your wrist, add your bracelet (described next), roll the sock over it and duck tape it.
- ◆ Wrap the chain around your wrist, joining the free end link with another link at the point that the chain is snug around your wrist.
- ◆ Pass the bolt or connector through the two links joining them.
- ◆ Attach your mini-beaner, or clip, to the end of the chain.